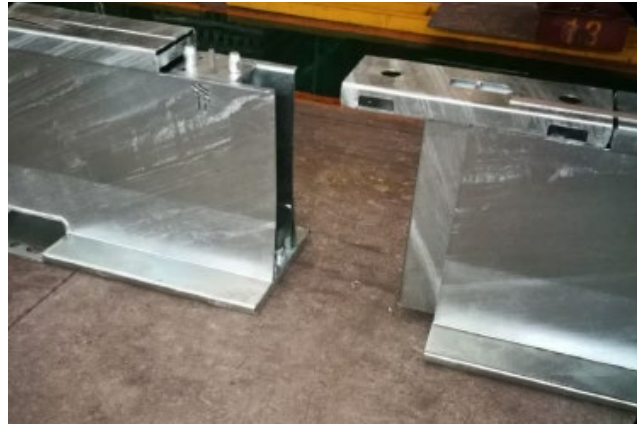

Specification for Road Safety Hardware Systems

APPENDIX C: TEMPORARY ROAD SAFETY HARDWARE SYSTEMS



April 2020

HIGHWAYGUARD SAFETY BARRIER



SUMMARY	
SUPPLIER:	Ingal Civil Products www.ingalcivil.co.nz
TEST LEVEL / CONDITIONS:	MASH TL-3 / MASH TL-4
FOR USE WITH	QuadGuard or TAU-II end treatments where reverse impacts are highly improbable, a risk assessment has been completed and steps undertaken to mitigate any risks identified or connected to BG800 barrier (with proprietary transition). In all cases appropriate transitions must be used between HighwayGuard and other hardware
STATUS	Accepted
TECHNICAL INFORMATION	
DIMENSIONS	6 m length, 540 mm width, 800 mm height
WEIGHT	614 kg per unit
MINIMUM LENGTH	120 m (HighwayGuard) 60 m (HighwayGuard LDS)
LENGTH TO POINT OF REDIRECTION	Interface between the last pinned barrier unit and the end treatment
ANCHOR POINT SPACING	58 m (HighwayGuard) 12 m (HighwayGuard LDS)
DEFLECTION	MASH TL-3: 1.93 m (HighwayGuard) MASH TL-3: 0.68 m (HighwayGuard LDS) MASH TL-4: 2.16 m (HighwayGuard)
WORKING WIDTH	MASH TL-3: 2.47 m (HighwayGuard) MASH TL-3: 1.22 m (HighwayGuard LDS) MASH TL-4: 3.51 m (HighwayGuard)
GRADE OR PLACEMENT RESTRICTIONS	<ul style="list-style-type: none"> Maximum grade 8% (1V:12H) Must be installed on asphalt pavement consisting of 150 mm thick asphalt concrete over a granular subbase
OTHER RESTRICTIONS / CONSIDERATIONS	Pins must be M24 x 330 mm Grade 8.8 threaded rod with 300 mm embedment and resin according to the System Supplier's instructions